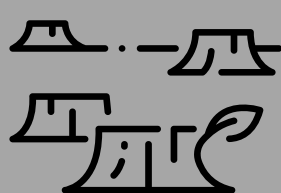


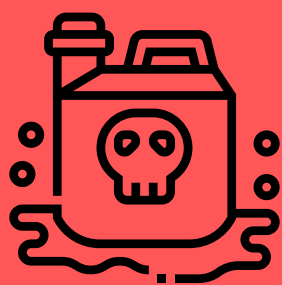
# MAKING TOBACCO HURTS THE ENVIRONMENT

## DEFORESTATION



It takes 13 million acres to produce the world's tobacco supply. That's an area of land over 17 times the size of Yosemite National Park.

## DESTRUCTIVE FARMING



Commercial tobacco farming involves toxic chemicals that runoff into ecosystems and damage waterways.

## WATER DEPLETION



Each cigarette takes about one gallon of water to produce

## SOURCES

- <https://apps.who.int/iris/bitstream/handle/10665/255574/9789241512497-eng.pdf>
- <https://pubs.acs.org/doi/10.1021/acs.est.8b01533>